



BERNAT® SPECKLED FAWN HAT | KNIT



INTERMEDIATE

SIZES

To fit head circumference

6/12 mos	17" [43 cm]
18/24 mos	18" [45.5 cm]
4 yrs	19" [48 cm]

INSTRUCTIONS

The instructions are written for smallest size. If changes are necessary for larger sizes the instructions will be written thus (). Numbers for each size are shown in the same color throughout the pattern. When only one number is given in black, it applies to all sizes.

Note: When working from chart, carry color not in use loosely across WS of work. The colors are never twisted around one another.

With B and set of 4 U.S. 4 (3.5 mm) needles, cast on **88 (92-96)** sts. Join for working in rnd, placing marker at first st.

1st rnd: *K2. P2. Rep from * around. Rep last rnd (K2. P2) ribbing 6 times more. Break B.

Change to U.S. 6 (4 mm) needles and MC. Knit 1 rnd even.

Size 6/12 mos only: Next rnd: *K11. M1. Rep from * around. **96** sts.

Size 18/24 mos only: Next rnd: K2. *K9. M1. Rep from * around. **102** sts.

Size 4 yrs only: Next rnd: *K8. M1. Rep from * around. **108** sts.

GAUGE

23 sts and 27 rows = 4" [10 cm] with U.S. 6 (4 mm) needles in Fair Isle Chart Pat.

All sizes: Knit 20 rnds of Chart, reading rnds from **right** to left, noting 6-st rep will be worked **16 (17-18)** times. Break A.

With MC and U.S. 5 (3.75 mm) needles, knit even in rnds until work from beg measures **6 (6¼-6¾)" [15 (16-17) cm]**.

Shape top: 1st rnd: *ssk. K12 (13-14). K2tog. Rep from * around. **84 (90-96)** sts.

2nd and alt rnds: Knit.

3rd rnd: *ssk. K10 (11-12). K2tog. Rep from * around. **72 (78-84)** sts.

5th rnd: *ssk. K8 (9-10). K2tog. Rep from * around. **60 (66-72)** sts.

7th rnd: *ssk. K6 (7-8). K2tog. Rep from * around. **48 (54-60)** sts.

9th rnd: *ssk. K4 (5-6). K2tog. Rep from * around. **36 (42-48)** sts.

11th rnd: *ssk. K2 (3-4). K2tog. Rep from * around. **24 (30-36)** sts.

Size 18/24 mos and 4 yrs only: 12th rnd: Knit.

13th rnd: *ssk. K1 (2). K2tog. Rep from * around. **18 (24)** sts.

All sizes: Next rnd: *K2tog. Rep from * around. **12 (9-12)** sts. Break yarn. Draw end tightly through rem sts.

MATERIALS

Bernat® Softee® Baby (5 oz/140 g; 362 yds/331 m)

Sizes	6/12 mos	18/24 mos	4 yrs	
Main Color (MC) Little Mouse (30010)	1	1	1	ball
Contrast A Antique White (30008)	1	1	1	ball
Contrast B Prettiest Pink (30205)	1	1	1	ball

Set of 4 sizes U.S. 4 (3.5 mm), U.S. 5 (3.75 mm) and U.S. 6 (4 mm) double-pointed knitting needles **or size needed to obtain gauge**. Stitch marker.



BERNAT® SPECKLED FAWN HAT | KNIT

Ears (make 2)

With MC and pair of U.S. 4 (3.5 mm) needles, cast on 12 sts.

Outer Ear: 1st row: (RS). Knit.

2nd and alt rows: Purl.

3rd row: K1. Kfb. Knit to last 2 sts. Kfb. K1. 14 sts.

5th row: Knit.

7th row: K1. Kfb. Knit to last 2 sts. Kfb. K1. 16 sts.

9th, 11th and 13th rows: Knit.

15th row: K1. ssk. Knit to last 3 sts. K2tog. K1. 14 sts.

17th, 19th, 21st, 23rd and 25th rows: K1. ssk. Knit to last 3 sts. K2tog. K1.

26th row: Purl. 4 sts.

Break MC. **Do not** cast off.

With A, cont as follows:

Inner Ear: 1st row: Knit.

2nd and alt rows: Purl.

3rd row: K1. (Kfb) twice. K1. 6 sts.

5th row: K1. Kfb. Knit to last 2 sts. Kfb. K1. 8 sts.

7th, 9th, 11th and 13th rows: K1. Kfb. Knit to last 2 sts. Kfb. K1. 16 sts at end of 13th row.

15th, 17th and 19th rows: Knit.

21st row: K1. ssk. Knit to last 3 sts. K2tog. K1. 14 sts.

23rd row: Knit.

25th row: K1. ssk. Knit to last 3 sts. K2tog. K1. 12 sts.

26th row: Purl.

Cast off.

Sew Ear side seams. Sew Ears to top of Hat as seen in picture.

Bow

With B and pair of U.S. 4 (3.5 mm) double-pointed needles cast on 4 sts.

1st row: Knit. **Do not** turn. Slide sts to other end of needle. Rep last row until I-cord measures 12" [30.5 cm].

Break yarn. Draw end tightly through all sts.

With tail left from cast-on, draw end tightly through cast on sts in same manner.

Tie cord into bow and sew to base of one Ear as shown in photo.

ABBREVIATIONS

www.yarnspirations.com/abbreviations

Alt = Alternate(ing)

Beg = Beginning

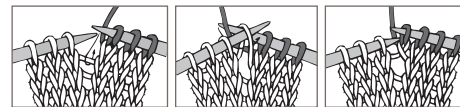
Cont = Continue(ity)

K = Knit

K2tog = Knit next 2 stitches together

Kfb = Increase 1 stitch by knitting into front and back of next stitch

M1 = Make 1 stitch by picking up horizontal loop lying before next stitch and knitting into back of loop



P = Purl

Rep = Repeat

Rem = Remain(ing)

Rnd = Round

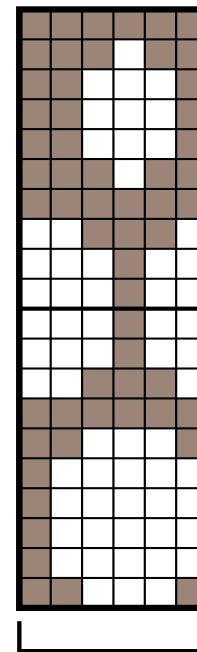
RS = Right side

Ssk = Slip next 2 stitches knitwise one at a time. Pass them back onto left-hand needle, then knit through back loops together

St(s) = Stitch(es)

WS = Wrong side

Chart



19
17
15
13
11
9
7
5
3
1 Start here

Key

■ = MC

□ = A